

APPLICATION PROCESS

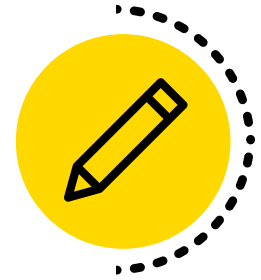
1

APPLICATION PHASE

Application submitted on OpenApply including all required documentation:

- Application Form
- Confidential School Report
- Parent Questionnaire
- Two Years of School Reports
- Other Assessments
- Non-refundable registration fee


 TIMELINE: ONCE PARENT COMPLETES APPLICATION

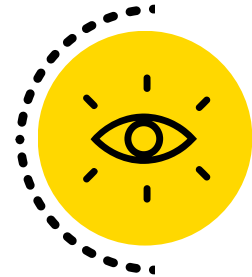


2

CONSIDERATION PHASE

Director of Admissions sends application to the relevant section of the school for recommendation for admission. If no further information is needed this phase will take a minimum of two weeks from receipt of the completed application. If further information is required this phase may be extended.

 TIMELINE: 2 WEEKS OR MORE



3

CONNECTING PHASE

Director of Admissions will confirm admission, share relevant information and will communicate a date to meet the Counsellor for orientation.

 TIMELINE: 2-3 DAYS



4

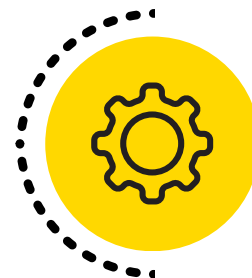
ORIENTATION PHASE

Student and parents will meet with the Counsellor to complete the orientation process and determine a start date for beginning school. Orientation takes place prior to the start of school in August or on the following days:

- Thursday orientation for a Monday start
- Tuesday orientation for a Thursday start

The relevant Principal's Office will share a welcome email with the Student Parent Handbook.

 TIMELINE: 2-3 DAYS



5

ONBOARDING PHASE

- The Counsellor will connect with the student during first two weeks of starting school
- If appropriate the Learning Support Case Manager will reach out to the family
- The Principal or Counsellor will connect with the family after the first two weeks of school to confirm the successful transition for the student into ISU.

 TIMELINE: FIRST 2 WEEKS OF STARTING SCHOOL

